

Déesse **CLINIC MELLITE** **LED MASK**

With 180 light bulbs, a multi-tasking LED facial mask
with 3 different wavelengths



With the LED mask, rejuvenate your skin
by caring skin elasticity and skin tone.



3-wavelength
LED sources
for various skin
concerns



With 180 LED
light bulbs, care
skin elasticity
closely



Light level
control function
and the auto
timer function



The ergonomic
design for face

A wearable type mask with LED lights for the optimal skin treatment

(customized mode setting for professional care)

A1/A2 MODE
RED
630nm + 830nm



P1/P2 MODE
GREEN
520nm + 830nm

C1/C2 MODE
RED+GREEN
630nm + 520nm + 830nm



RED
630nm+830nm

collagen/elastin regeneration

- Increases regeneration of collagen and elastin deep inside.
- Helps reduce fine wrinkles with improved skin texture.
- Restores skin's natural radiance with replenished and vital complexion.
- Makes skin firmer and tighter.



GREEN
520nm+830nm

anti-pigmentation

- Reduces pigmentation and darkness caused by too much sun exposure.
- Soothes irritated and sensitive skin.
- Improves uneven skin tone caused by post-inflammatory, acne, etc.
- Evens out skin tone with brightened complexion.

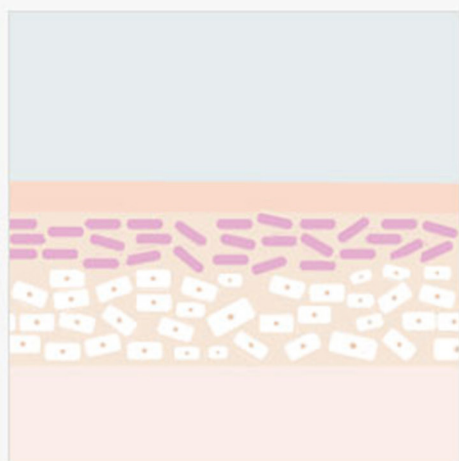


RED+GREEN
630nm+520nm+830nm

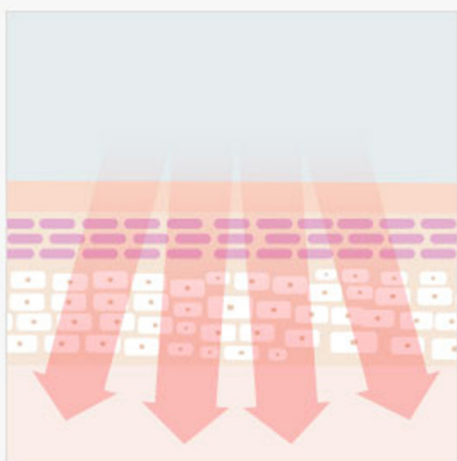
cell regeneration

- Increases healing and recovery after the treatment.
- Repairs damaged cells with enhanced cell function.
- Penetrates deeper into the cell level for cell strengthening.
- Improves the appearance of scars.

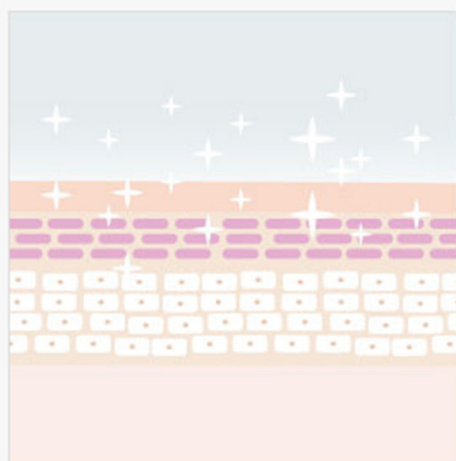
ADVANTAGES OF DEESSE LED MASK



Skin concerns, such as losing skin elasticity and firmness, make your skin dull and tired.



Depending on the skin concerns, the 3 different wavelengths go into your deep skin cells.



Depending on skin concerns, the 3 different wavelengths go into your skin cells deeply and restore them by brightening skin tone and uplifting skin cells.

The Secret Of LED near infrared ray, NIR

The stunning effects of LED, proved by worldwide journals.



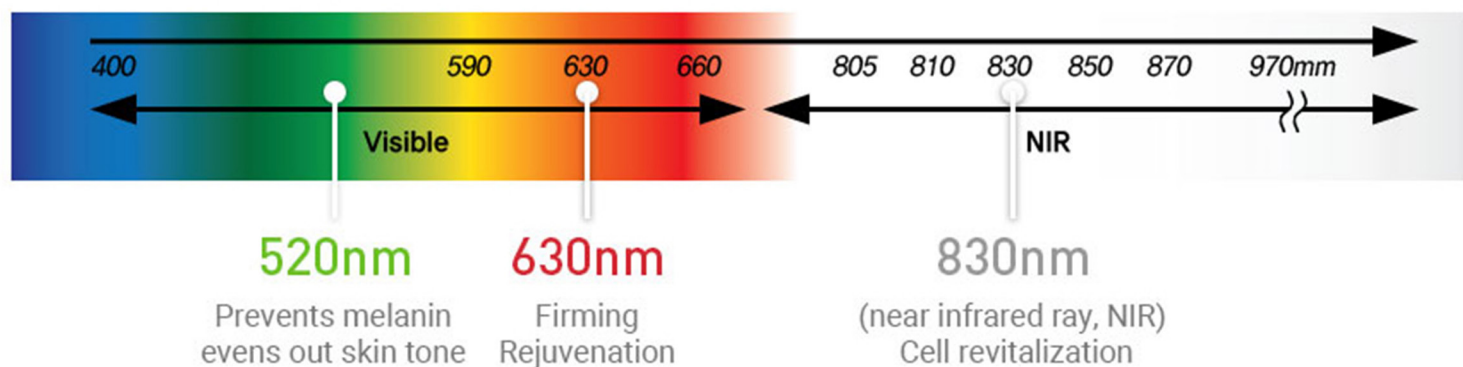
NASA NEWS

Shows the effect of NIR, increasing the speed of cell regeneration.



The journal of Lasers in Medical Sciences

Shows the effect of NIR, stimulating collagen growth.





You can use safely before bedtime
The auto timer function

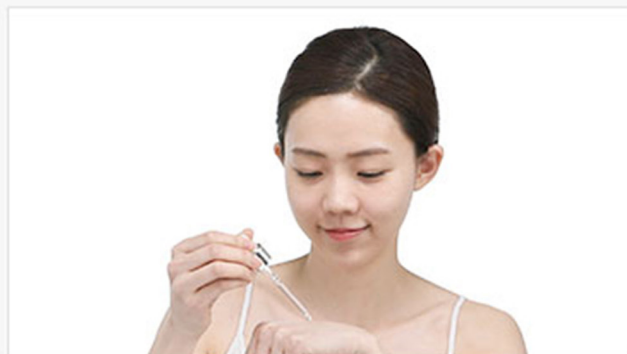
As it turns off automatically after the set time, it can be used safely for sensitive skin, also.
(can be controlled per 5mins/ up to 15mins)



The good adherence like my own face
The ergonomic design for face

With the ergonomic design, deliver LED light to your whole face closely for the better results.

HOW TO USE



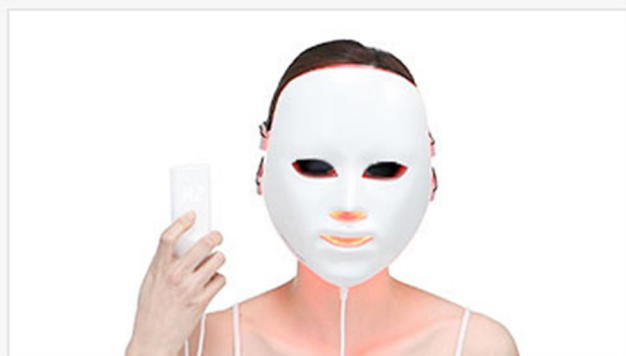
- 1 Finish the skincare routine with an ampoule or a cream.



- 2 When putting on the eye guard, close your eyes.



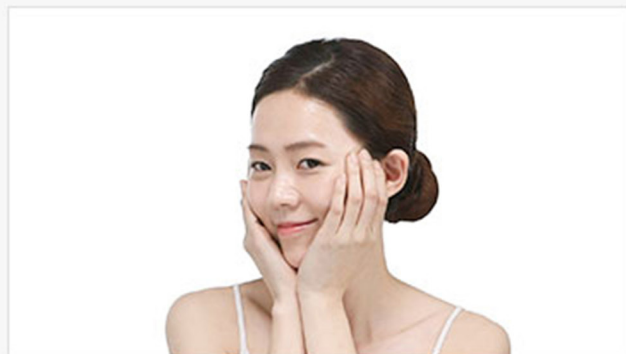
- 3 Put on the LED mask after connecting the controller and the adapter.



- 4 Press the left button to turn on the power and press it to choose the mode.

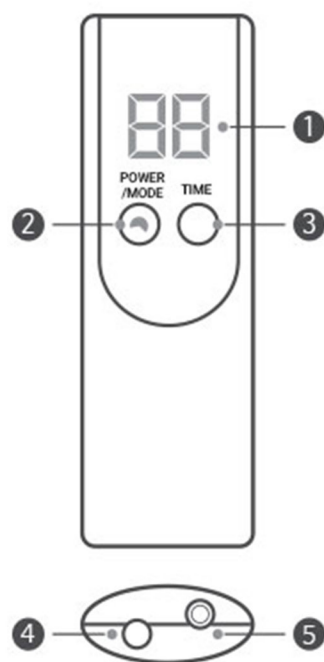


- 5 Press the right button to control the time.
(The default time is 10 minutes)



- 6 When time's up, the mask turns off automatically.

COMPONENTS



Instruction for the controller of Mellight Deesse LED Mask

- ① LCD screen : shows the setting status
- ② Convex Button: controls the modes and levels
- ③ Concave button: controls time setting
- ④ Mask connector
- ⑤ Adaptor connector

Instruction for Mellight Deesse LED Mask

1. Instruction for Mellight Deesse LED Mask

- Please connect the controller, the power cord, and the mask cable.
- Please plug in the adaptor. (the LCD screen will blink for a while.)
- Please press the button ① on the controller for 2 seconds.
(After the LCD screen shows "Mode&Level" and "Time" orderly, the device will begin to work with a beep sound.)



- Press ① to control the mode and level.
- Press ② to control the time setting
- It turns off automatically after the set time.
(Press the power button for about 2 seconds during the use if you wish to turn off the device. The device will be automatically set on the previous mode you used when turned on again.)

- The button ① : for controlling the modes and level settings
- The button ② : for controlling time settings

2. Setting for modes and levels

- The button① is for controlling the modes and levels.
- The left part of the screen shows the set mode and the right part of the screen shows the set time.



A1: 630nm(Red)+830nm(Nir) / the low level
A2: 630nm(Red)+830nm(Nir) / the high level
P1: 520nm(Green)+830nm(Nir) / the low level
P2: 520nm(Green)+830nm(Nir) / the high level
C1: 630nm(Red)+520nm(Green)+830nm(Nir) / the low level
C2: 630nm(Red)+520nm(Green)+830nm(Nir) / the high level



3. Time setting

- The setting time is 10 minutes by default.
- Press the button② one time to add 5 min with a beep sound.
You can set the desired time up to 15 minutes.



When it works,
the dot blinks

4. Recommended time

- The recommended time is 10 minutes per day.
- After using the device, please disconnect the main power adaptor.
- Please do not disconnect the mask connector while the device is still working,
which can cause malfunction.

인정번호(No.) : KTC-ADB-2720

의료기기 제조 및 품질관리 기준 적합인정서 (Certificate of GMP)

■ 업체명/허가번호(Company name of Applicant / License No.)

(주)센바이텍/제 3749 호

SENBITEC

■ 대표자 (Representative)

김상명 (KIM SANG MYUNG)

■ 업체 소재지 (Company address of Applicant)

경기도 안양시 동안구 열에스로91번길 46-24 , 2층 202, 203호(호계동, 대림프라자)

202, 203, 2F, 46-24, LS-ro 91beon-gil, Dongan-gu, Anyang-si, Gyeonggi-do, Korea

■ 제조소명 (Name of Manufacturer)

제조자 : (주)센바이텍(SENBITEC)

■ 제조소 소재지 (Address of Manufacturer)

제조자 : 경기도 안양시 동안구 열에스로91번길 46-24, 2층 202, 203호(호계동, 대림프라자)

202, 203, 2F, 46-24, LS-ro 91beon-gil, Dongan-gu, Anyang-si, Gyeonggi-do, Korea

■ 품목군 (Category)

수술용 장치(Surgical Operation System)

의료기기 제조 및 품질관리기준에 적합함을 인정합니다.

(We hereby certify that the above manufacturer complies with Korea
Good Manufacturing Practices of Medical Devices for the product group listed above)

발행일자(Date of Issue) : 2018. 07. 11

유효기간(Date of Expiration) : 2020. 10. 20



경인지방식품의약품안전청
GYEONGGI REGIONAL FOOD AND DRUG ADMINISTRATION



한국기계전기전자시험연구원
Korea Testing Certification



CAUTIONS



IN CASE OF CONSULTING YOUR DERMATOLOGIST

• Before using Deesse Mellight LED Mask

- In case of skin treatment or use of photosensitizer, please use the device after consultation of dermatologist.
- If you have decortication, please consult your dermatologist
- Within the recent 7 days, if you use acne treatment (like Accutane), whitening care, Retin A cream, or the cosmetic devices which have retinol, please do not use the device.

• During using Deesse Mellight LED Mask

- If there are any red spots or ardor on skin, please stop using the device. If the symptom becomes improved, please use the device with the lower level and lesser time. Please consult your dermatologist, if you see no improvement in symptoms.
- If there are any blisters or burns on skin, please consult your dermatologist immediately.
- If there are any pigmentation on skin, please stop using the device. The symptoms will be improved within 1-2 weeks. If you see no improvement in symptoms, please consult your dermatologist (the symptoms can be improved quickly by applying whitening devices)
- After improvement in pigmentation, please use the device with the lower level and lesser time

IF THERE ARE PROBLEMS LIKE BELOW

Problem	Check list
If the device doesn't turn on	Check if the power plug is plugged in.
	Check if the jack of the adapter is properly connected to the main device
	Press the power button once again.
If the LED light doesn't light up	Check if the device is turned on
	Check if the cable for mask is properly connected to main device
	Check if you press the play button after you set up the mode for output.

SPECIFICATIONS

- PRODUCT NAME: DEESSE MELLIGHT LED MASK
- MODEL NAME: SBT-MLLT-L3
- VOLTAGE: DC24V/0.6A
- POWER CONSUMPTION: 8W
- MANUFACTURER: SENBITEC CO.,LTD
- ORIGIN: REPUBLIC OF KOREA
- ADDRESS: 2F, 46-24, LS-ro 91beon-gil, Dongan-gu, Anyang-si, Gyeonggi-do, Republic of Korea
- DISTRIBUTOR: LEEGEEHAAM COSMETICS
- ADDRESS: 18F, 157, Dosan-daero, Gangnam-gu, Seoul, Republic of Korea



R-R-sEN-MLLT-L3